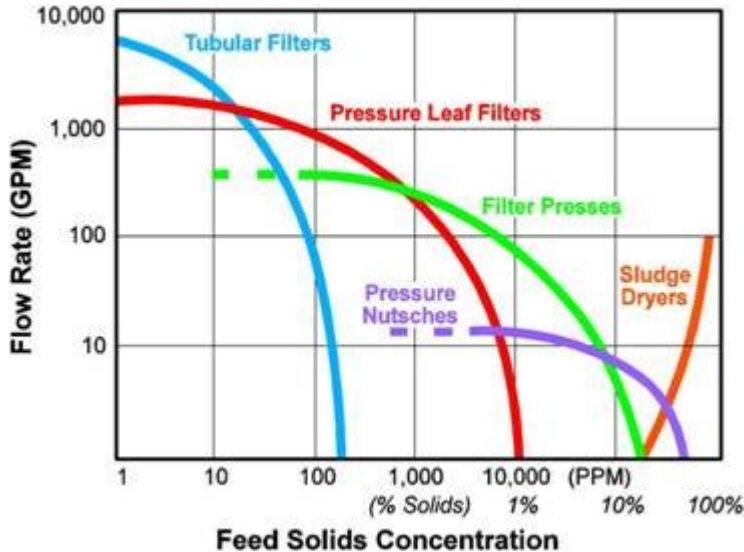
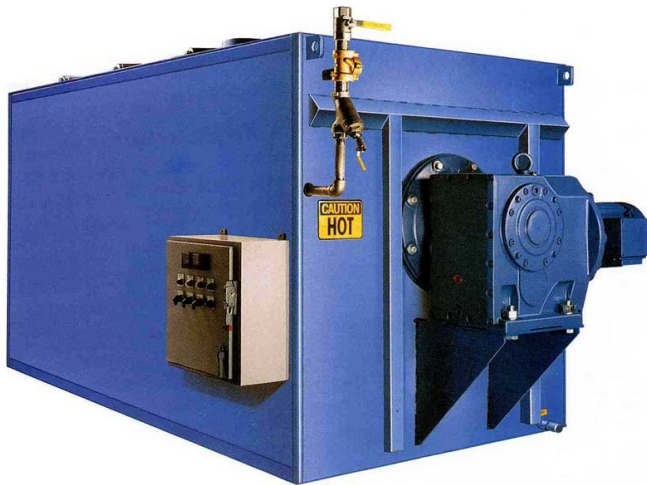


**Durco Enviro-Dri™ Sludge Dryers Are Specifically Designed For:**

- **Supplemental Dewatering Of Sludge Cake (>25 wt% Solids), Reducing Waste Volume & Weight Up To 90%**
- **Ultra-Reliable, Heavy Duty, Every Day Batch Waste Disposal With Low Maintenance Operation In The Most Demanding Applications**
- **Typical Application Takes Direct Discharge From An Integrated Filter Press, Providing A Small Footprint**

Durco Also Offers QP Overhead Filter Presses and EP Sidebar Filter Presses

**Durco Enviro-Dri™ Sludge Dryer:**

1. Enviro-Dri Sludge Dryer Overview
2. Durco Enviro-Dri Sludge Dryer Features & Benefits
3. Enviro-Dri Sludge Dryer Engineered To Reduced Disposal Costs
4. Durco Enviro-Dri Sludge Dryer Your Savings Add Up To Profits!
5. Durco Filtration / Dryer Systems
6. Durco Industrial Filtration Products

**Reduce Waste Disposal Costs As Much As 75% With One Of The Safest & Most Efficient Sludge Dryers Available On The Market**

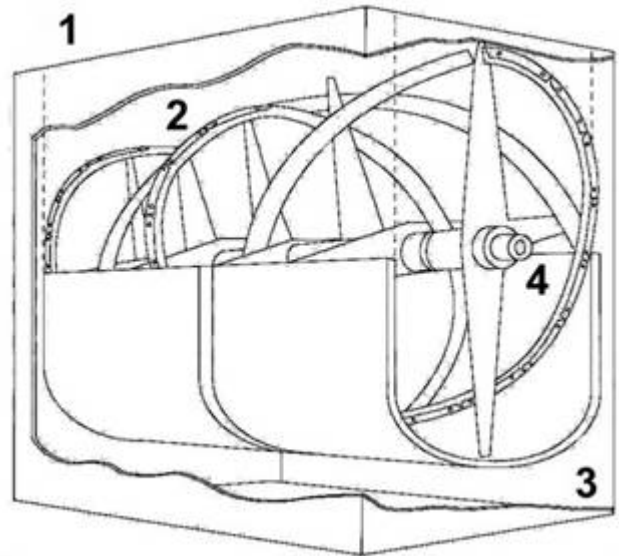
[More Information On Durco Enviro-Dri Sludge Dryers Online](#)  
[Download A Printable Durco QP Overhead Filter Press PDF Document](#)  
[Download A Printable Durco EP Sidebar Filter Press PDF Document](#)

**Ascension Industries** has purchased & owns all records, drawings, bills of materials and support data for existing: **Duriron (DURCO), Aquacare, FSD Filter Presses, Pressure Leaf Filters & Pressure Nutsches, Tubular Filters & Enviro-Dri Sludge Dryers.** Ascension is the only authorized supplier of certified DURCO OEM Filters & Filter Parts.

**Reduce Your Waste Disposal Costs As Much As 75% While Operating With One Of The Safest And Most Cost Efficient Sludge Dryers On The Market Today**

**Durco Enviro-Dry Sludge Dryers Are Steam Heated**

1. Modular Design
2. Heavy Duty Rotor
3. ASME VIII Steam Jacket
4. Heavy Duty Bearing Assembly



## Safety And Maximum Operating Efficiency

Durco Enviro-Dri Sludge Dryers typically use available plant steam (25 psi) as the heat source. This not only minimizes operating costs and drying time, but also assures a safe method of transferring heat to the sludge trough.

The absence of electrical heating elements or open flame systems found on some models virtually eliminates fire or explosion hazards. If plant steam is not available, Durco can provide an appropriate high efficiency boiler system.

## Designed For Heavy Duty Use

Heavy duty construction and engineered simplicity combine to provide optimum reliability for everyday use. The Durco Enviro-Dri sludge dryer requires only minimal maintenance.

The integral Steam Jacket is designed and built to ASME Code Standard. ASME Code Stamp is included.

## Convenient Batch Loading And Discharge

The Durco Enviro-Dri Sludge Dryer is equipped with a pneumatic operated sliding or hinged loading hatch at the top of the unit. This provides several convenient methods of loading. The unit can be equipped with a cake chute and placed directly underneath any filter press such as [Durco QP Filter Press](#) or [Durco EP Filter Press](#).

The Enviro-Dri Sludge Dryer can receive the sludge by way of a conveyor system or fork lift hoppers. The dried waste can be discharged into drums, hoppers, or bulk bag "supersacks" ready for landfill or recycling.

## Enviro-Dri Fill Capacity

The Durco Enviro-Dri Sludge Dryer comes in several standard model sizes, with fill capacities ranging from 2 ft<sup>3</sup> to 80 ft<sup>3</sup> (see chart on page 4 for the optimum dryer size for your needs).

Fill level is determined according to your batch requirements. The chamber's remaining air space is important for proper venting and drying of the sludge.

**[Contact Durco Filtration](#) Or Call To Speak With A Filtration Engineer For More Information About Custom / Special Sludge Dryer Sizes.**

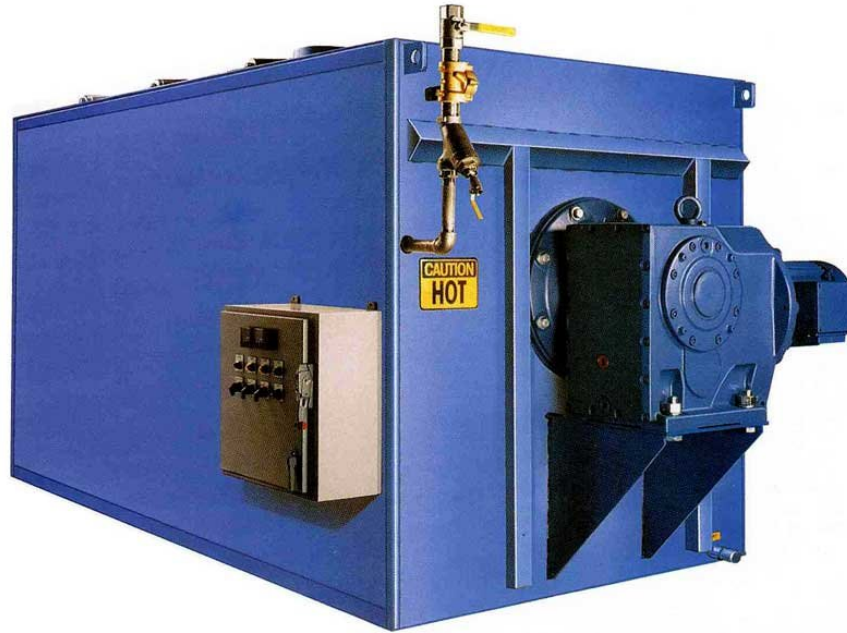
## Enviro-Dri Fill Chamber

The Enviro-Dri Sludge Dryer fill chamber contains a heavy duty rotor with removable scraper blades to provide continuous and uniform mixing of sludge on the heated surfaces of the chamber.

Typical drying cycles average 4 hours or less, allowing two cycles per shift.

**Contact A Durco Filtration Engineer To Design Your Optimum Filtration / Dryer System:**

## 2. Durco Enviro-Dri™ Sludge Dryer Features And Benefits



### Enviro-Dry Sludge Dryer Features And Benefits:

---

- Closed Drying Process      Continuous, homogeneous drying reduces volume, controls emissions, minimizes dusting and eliminates leaks or spills.
- Quicker Drying Cycles      Quicker drying cycles allow smaller models to handle larger press loads by using inexpensive hoppers.
- Indirect Heating      Low temperature heat transfer eliminates incineration and solids volatility problems. Single operation. All stages take place in the dryer.
- Low Pressure Steam Operation      Provides efficient heat source with uniform controlled temperature. Generally available in the plant.
- ASME Code Jacket      ASME Code Stamped trough jacket provides efficient heat transfer surface.
- Heavy Duty Drive Assembly      Double helix, heavy duty rotor and drive assembly. Includes adjustable and replaceable wiper blades.
- Dryer Sized To Filter Press      No intermediate material handling. Batch drying operation is independent from press operation.
- Sliding Or Pneumatic Lift Hatch      Easy access to dryer rotor.
- Control Timer      Permits adjustable drying time.
- Modular Design      Easy to retrofit in place.



### 3. Durco Enviro-Dri™ Sludge Dryer: Engineered To Reduce Your Disposal Costs

#### Advantages Of The Durco Filtration Steam Heat Transfer System

The Durco Enviro Dri Sludge Dryer is designed to accommodate your batch disposal requirements. As a batch unit, the Durco Enviro Dri Sludge Dryer saves energy by working only when required, and not on a continuous cycle.

For every pound of steam used, approximately 0.8 pounds of water are removed from the sludge, thus providing 80% efficiency. Steam is clean, safe and completely utilized within the trough steam jacket. There is no high temperature exhaust gas, as in gas fired units, and no risk of explosion or fire.

The ASME code constructed steam jacket has been designed to provide optimal surface area to volume ratio.



Heavy Duty, Double Helix, High Torque Rotor

#### Blending Of The Sludge

The heavy duty, double helix, high torque rotor has been designed to effectively handle the blending of the sludge throughout every stage of drying.

Most sludge cakes are shear sensitive and when exposed to agitation, will reform into a "soupy" consistency.

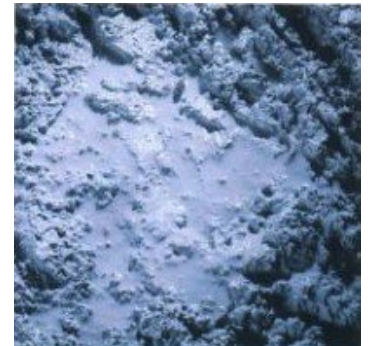
The Durco Enviro-Dri Sludge Dryer will blend the sludge cake into a "soupy" consistency early in the cycle. As it continues to dry, it passes through a granular state and then into a uniform pellet consistency, which is ideal for transportation. The pellet consistency minimizes dust.



Typical sludge cake contains up to 75% water

#### Venting

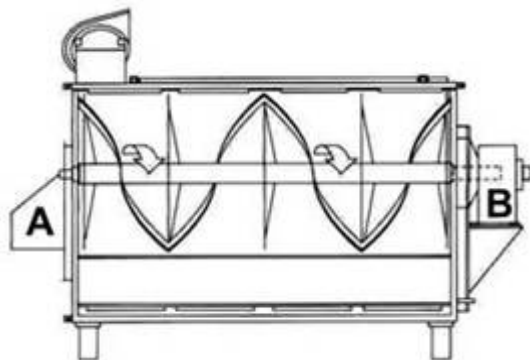
Since the Enviro-Dri Sludge Dryer is a batch dryer, the fill chamber is sized to accommodate the air space required to allow proper venting and drying for each batch. As the heated sludge is systematically and continuously brought to the surface, entrained vapor is released into the airspace. The vent system draws air across the sludge mass thereby removing moisture.



Upon blending, the shear sensitive sludge cake reforms into a "soupy" consistency.

#### Durco Enviro-Dri Sludge Dryer Sizing Chart

MODEL	ED2	ED6	ED10	ED14	ED22	ED30	ED45	ED60
MAX.CAP (Cu.Ft.)	2.5	7.5	12	17	26	36	52	80



The sludge is continually moved along the steam heated jacket and pushed toward the discharge end. (A) The sludge is moved up to the surface to allow the entrained vapor to escape while being pushed back along the surface to the drive end. (B) It then works its way down again to repeat the cycle until it reaches the desired dry pellet state.

The discharge end is then opened to deposit the pellets into the desired container ready for disposal or reclamation.



The final pellet form is ideal for dust-free transportation, and can save as much as 75% in disposal costs.



## 4. Durco Enviro-Dri™ Sludge Dryer Your Savings Add Up To Profits!

### Calculate How Your Savings Will Add Up To Profits:

CURRENT ANNUAL DISPOSAL COSTS CALCULATIONS						
_____	X	_____	X	=	_____	
Volume Of Sludge in Tons or Containers per Day or Week		Disposal Cost per Ton or Container	260 days or 52 weeks		Total Yearly Disposal Costs	
YEARLY SAVINGS CALCULATIONS						
_____	X	_____	=	_____	or	_____
Yearly Disposal Costs		60% Reduction in Costs *	Reduction in Disposal Costs			Annual Increase in Profits

This easy to use worksheet will help you calculate the savings and payback of your Durco Enviro-Dri Steam Sludge Dryer.

\* Typical plating sludges of 25 to 28% solids content will yield 60% average weight and volume reductions after drying.

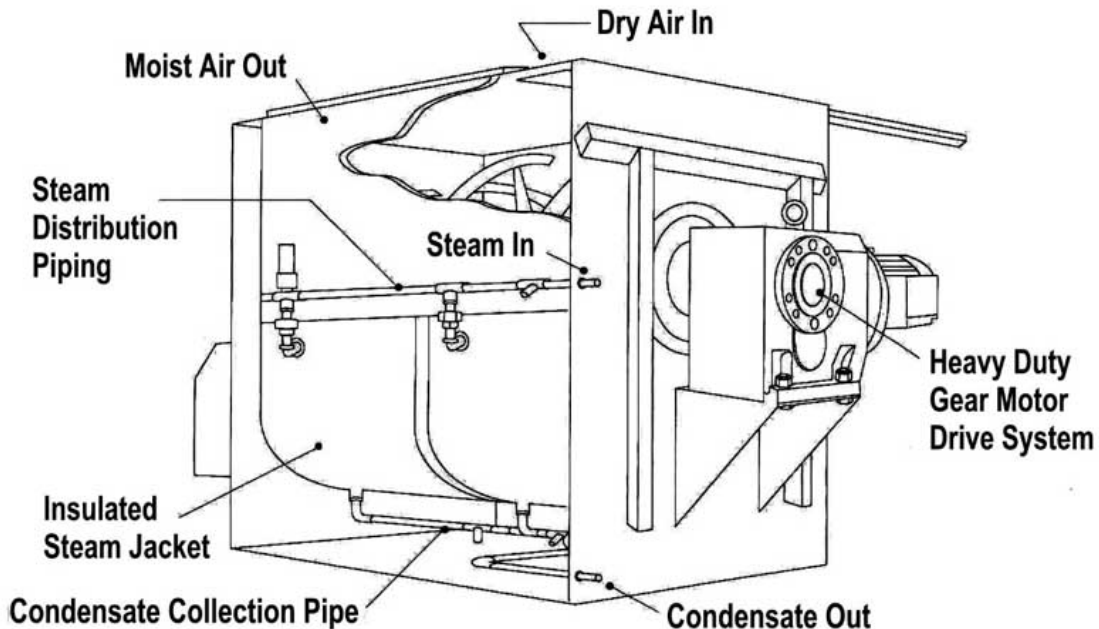
***Payback Period - Typically Less Than 1 Year!***

### Optional Sludge Dryer Equipment

- Stainless Steel Trough and Rotor
- Exhaust Fume Scrubber
- Loading/Unloading Material Handling Systems
- Boiler Packages where steam is unavailable
- Condensate return to improve system efficiency

### Custom Sludge Dryer Design Applications

- Durco can engineer a drying system to fit your special needs.
- Filter Press / Pressure Leaf Filter and Dryer combinations are available.





## 5. Durco Integrated Filtration / Dryer Systems

Durco Filtration - Manufacturers Of Industrial Filtration Equipment & Systems

*Pretreatment, Separation, Conditioning, And Disposal / Reduction Of Solids:*



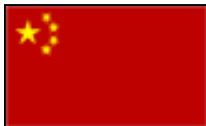
### Typical Customized Filter / Dryer Package

1. The Durco QP Overhead Filter Press
2. Durco Enviro-Dri Sludge Dryer
3. Fume Scrubber - Can realize in excess of 99% efficiency for dust removal
4. One Cubic Yard Hopper
5. Crane - Overhead crane to assist in lifting materials to the working platform

### Durco Filter Press Designs

Durco manufactures the [QP Filter Press](#) (shown above) to make it easier and more economical for a wide segment of the industry to meet the process and environmental requirements in solids-liquid separation.

The [Durco EP Filter Press](#) is designed specifically for dependable, simple and economic performance in smaller volume filtration applications.



"M" Stamp

Codes: ASME Sec. VIII, Division I (U and R Stamps)  
China Code "M" Stamp

**Contact A Durco Filtration Expert To Discuss Your Filtration / Dryer Requirements**



U & R Stamp

## 6. Durco Industrial Filtration Product Lines

[Pressure Leaf Filters](#)

[Tubular Backwashing Filters](#)

[Pressure Nutsches](#)

[Filter Presses](#)

[Sludge Dryers](#)