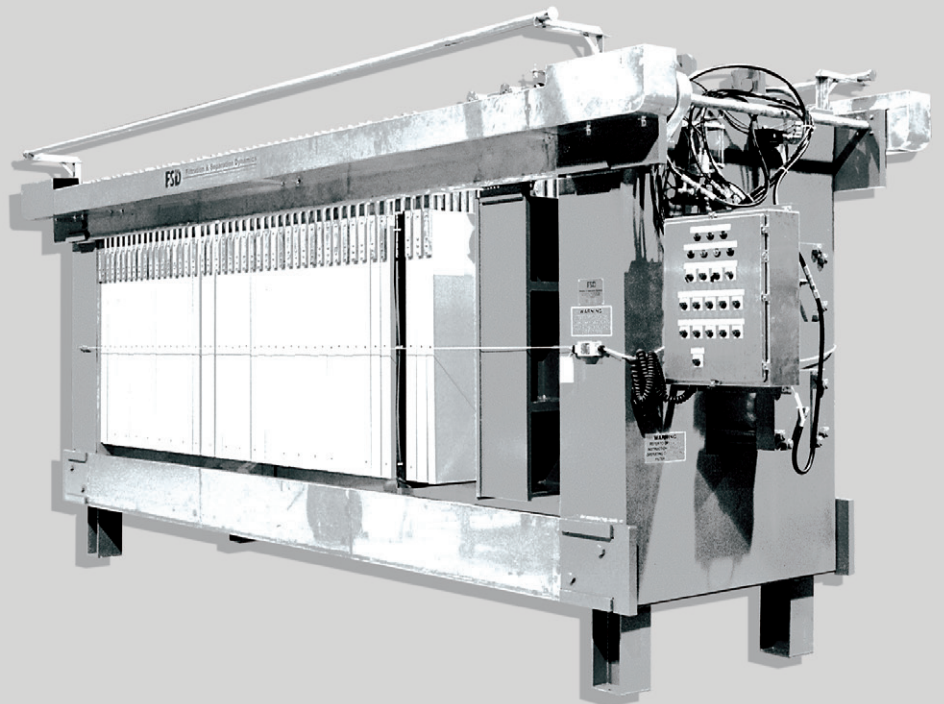
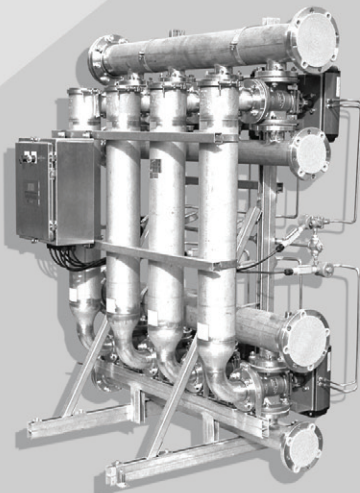
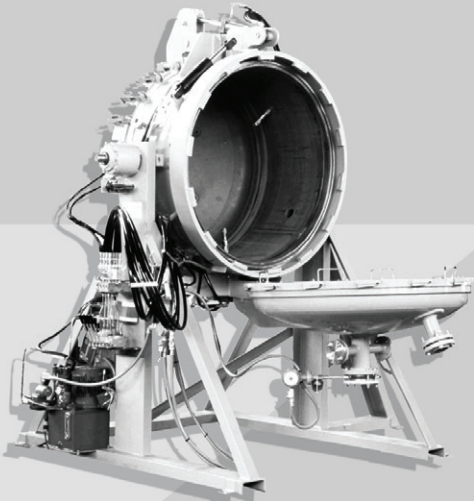
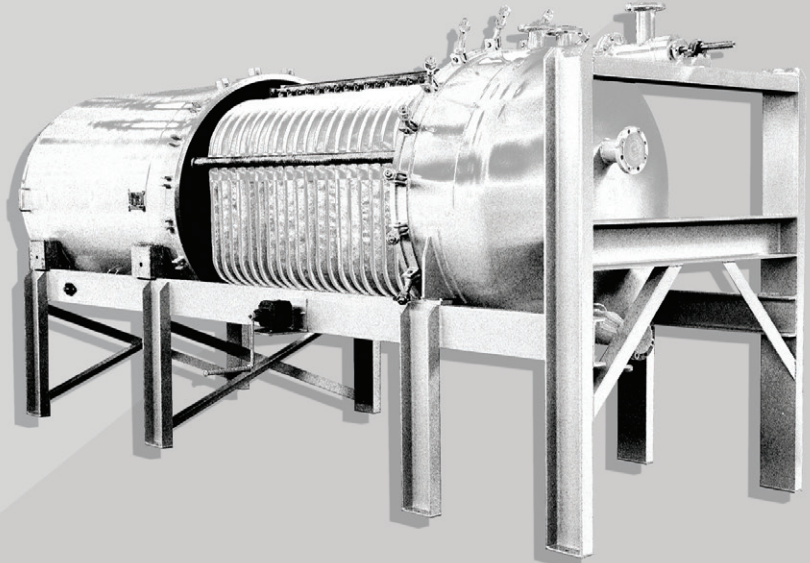
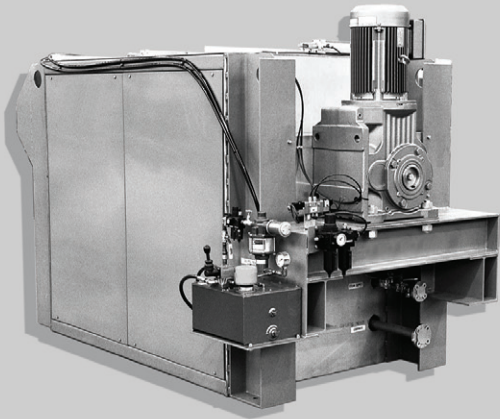


# DURCO FILTERS

by Ascension Industries



## FILTRATION PRODUCTS

# LIQUID-SOLID SEPARATION EQUIPMENT

**DURCO**

## **Filter Press**

Filter Presses are designed for batch operations with liquids containing high solids concentrations or slurries (3%-30% or more solids by weight). If it's pumpable, it can be filtered.

Two design configurations are available. The EP Filter Press is a sidebar design featuring economical operation requiring only factory air for utilities. QP Filter Presses feature four sidebars and offer enhanced performance in severe applications.

Both models can be equipped with automatic shifters, drip trays, cake chutes and conveyors. A full range of automation is available from manual operation to fully automatic.



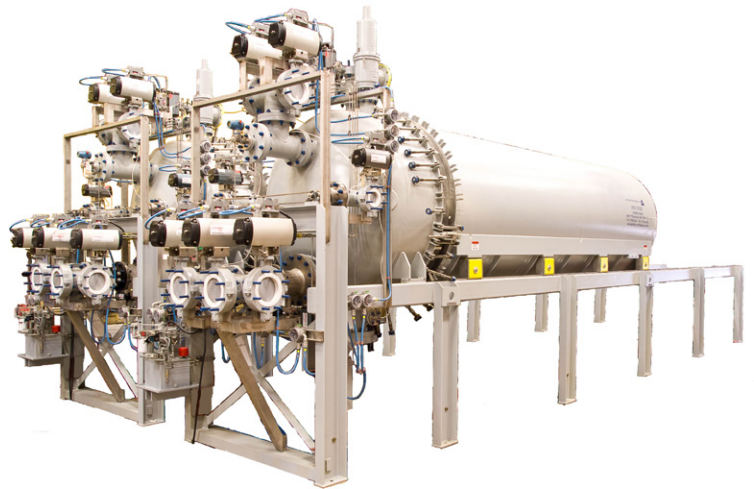
## **Pressure Leaf Filter**

Pressure Leaf Filters are designed for high flow rates applications with less than 2%-3% solids loadings.

They are available in either wet cake (sluicing) or dry cake (vibrating) discharge models.

Horizontal configurations (pictured) maximize filtration area while vertical models minimize footprint. Steam jackets are available for both models.

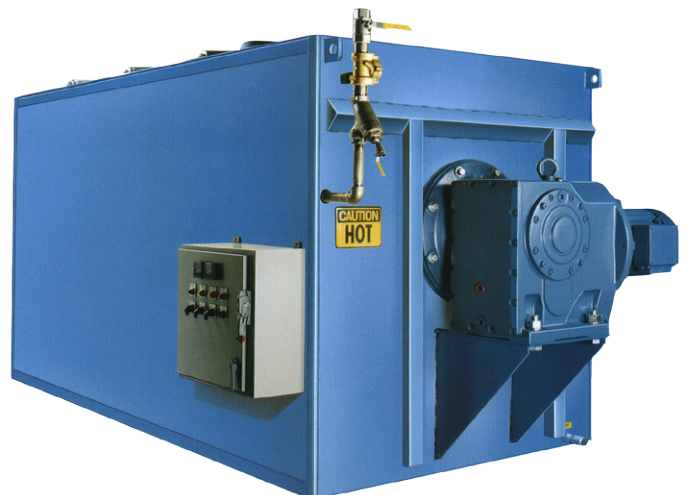
A wide variety of filter leaves are available including screened, metal and polypropylene with cloth bags. Pump, pre-coat and admix skids are available with full instrumentation and fully integrated controls.



## **Sludge Dryer**

Sludge Dryers are designed for supplemental dewatering of sludge cake (>25% solids by weight) up to 60%, greatly reducing waste volume and weight.

They are typically used in conjunction with a Filter Press, in which the cake discharges directly onto the dryer. This integrated design provides a small footprint. Low-pressure steam (<25 psi) contained in a steam jacket provides heating energy while the sludge cake is mixed within the dryer.



# A FILTER FOR EVERY APPLICATION

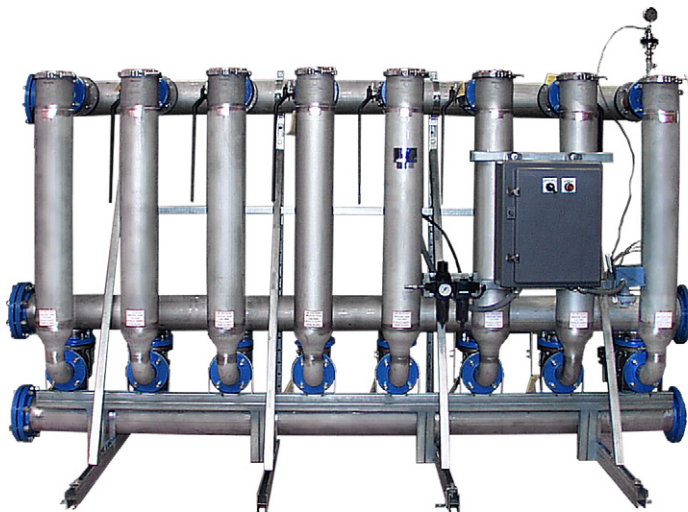


## **Pressure Nutsche**

Pressure Nutsches are ideal for full-scale applications requiring recovery of the filter cake or piloting of new modified processes.

They are designed to incorporate multiple processes with the vessel such as steaming, sparging, drying or washing. A wide variety of solids loading and flow rates including intermittent feeding can be accommodated. Filter cakes can exceed several inches in thickness.

Manual versions or hydraulically actuated, fully automated versions are available for custom process applications.



## **Tubular Backwashing Filter**

Tube Filters are designed for high flow rates and continuous operation in applications with low solids loadings. There are various models with different materials of construction. All filters are available with manual or automatic control and a wide variety of filter material.

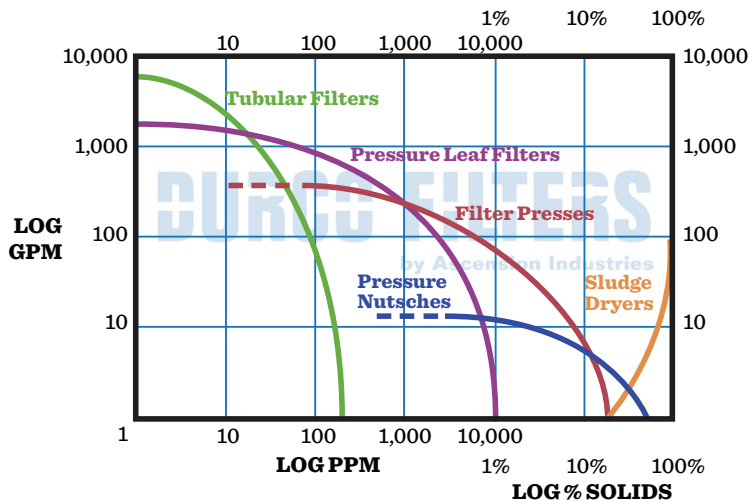
**TE1, TE2, TE3 (pictured)** - features a stainless steel construction, providing constant flow rates to 5000 GPM or more. Compact footprint minimizes floor space.

**PTE** - All wetted parts are fluorocarbon lined for outstanding resistance to chemical attack.

**PVC** - Continuous filtration of water and mildly aggressive fluids with automatic backwash options.

*Durco Filters by Ascension Industries is the only filter and parts supplier capable of matching original equipment specifications and dimensions for filters made or recognized as: Durco, Duriron, FSD, Filtration Separation Dynamics, Enzinger, and Aquacare brands.*

*For more information, contact [filtersales@asmfab.com](mailto:filtersales@asmfab.com) or visit our website [www.durcofilters.com](http://www.durcofilters.com)*



**Tubular Filters:** <220 PPM for biological solids, upwards of 550PPM for granular solids, high flow rates

**Pressure Leaf Filters:** <2%-3% solids, up to 2,000 GPM per filter

**Pressure Nutsches:** great for piloting, up to 300 PSI

**Filter Presses:** low flow, 3%-30% or more solids

**Sludge Dryers:** >25% solids in weight, typically used in conjunction with Filter Presses

## Pilot Testing

For new or difficult applications, pilot testing at a customer's process plant site is recommended. Durco Filters field testing confirms feed rates, filter media, filter aids and other filtration factors supporting optimal operation.

## Parts

Durco Filters provides a complete line of spare and replacement parts for all of our filtration systems and products. We stock many parts and can provide 24-hour delivery in emergency situations. Please inquire about:

- Replacement Pressure Leaf Filter leaves
- Tubular Filter bags and screens
- O-rings, gaskets and filter elements
- Sluicers, valves and controls
- Replacement press plates

## Lab Testing

Durco Filters Application Engineers test customer samples to help ensure that our equipment meets the needs of unique application. Durco Filters' lab will determine the optimum set of equipment parameters for each application including: equipment type, sizing, filter media, flow rates and filter aid requirements.

## Field Service

The Durco Filters Field Service team travels the world to keep filtration systems performing at peak efficiency. Services offered include:

- System Startup
- Training
- Preventive and Maintenance Contracts
- Installation Supervision
- Emergency Repair and Service
- Equipment Upgrades and Refurbishments

Ascension Industries, Inc.  
1254 Erie Avenue  
North Tonawanda, NY 14120  
www.durcofilters.com

Phone: 716.693.9381  
Fax: 716.564.9044

sales@asmfab.com  
filtersales@asmfab.com